



RECORD, 148a North View Road, Crouch End, London, N8 7NB

Guide Price £570,000

Spacious 2-Bed First Floor Flat with Private Garden in North View Road, Crouch End, N8

Features:

- 2-bedroom first-floor flat
- Fitted kitchen
- Spacious reception room
- Private garden for outdoor relaxation and entertaining
- Opportunity for future development, subject to necessary consents

Private Garden:

Enjoy the luxury of a private garden.

Family Living:

A spacious reception room and a fitted kitchen make this property ideal for family gatherings and daily living.

Comfortable Bedrooms:

Two bedrooms provide ample space for rest and relaxation.

Modern Amenities:

The property boasts modern amenities.

Prime Location:

Located in the desirable North View Road, Crouch End, the property offers easy access to parks, schools, and cultural activities.

Potential Development:

Exciting opportunity for future development, subject to necessary consents, allowing you to customise your living space.

Act Now:

Don't miss out on this rare opportunity to secure a spacious flat with potential for future development. Contact us to schedule a viewing.

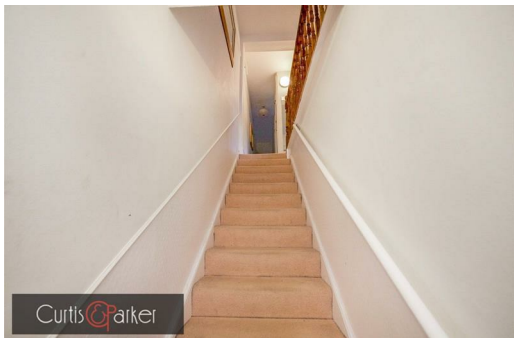
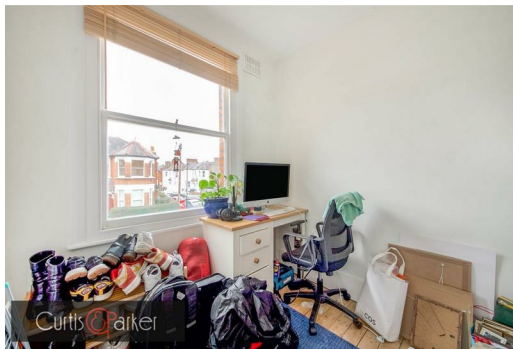
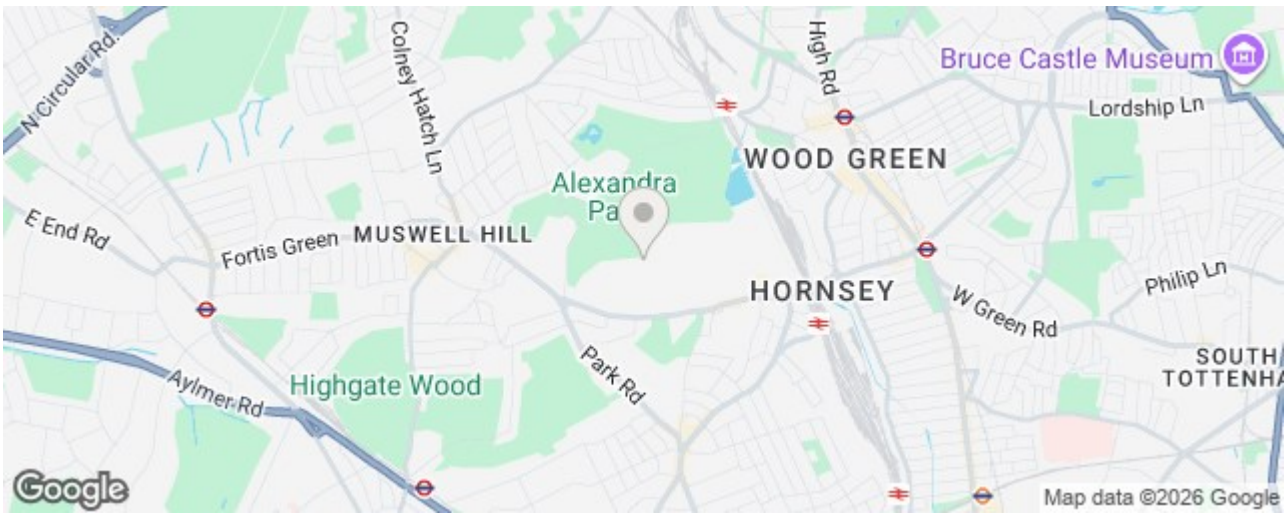


Ground Floor **First Floor**



Total floor area 74.2 m² (799 sq.ft.) approx

This floor plan is for illustrative purposes only. It is not drawn to scale. Any measurements, floor areas (including any total floor area), openings and orientation are approximate. No details are guaranteed, they cannot be relied upon for any purpose and they do not form part of any agreement. No liability is taken for any error, omission or misstatement. A party must rely upon its own inspection(s). Powered by www.focalagent.com



Energy Efficiency Rating		Environmental Impact (CO ₂) Rating	
Band	Score	Band	Score
A	92-100	A	1-10
B	81-91	B	11-20
C	69-80	C	21-30
D	55-68	D	31-40
E	39-54	E	41-50
F	21-38	F	51-60
G	1-20	G	61-70

Energy Efficiency Rating: 65 (D)

Environmental Impact (CO₂) Rating: 55 (D)

